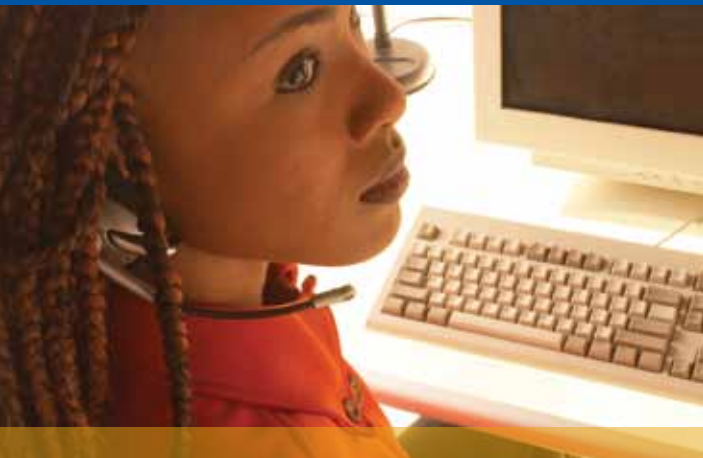


# BUILDING INDEPENDENCE... CHANGING LIVES THROUGH THE *Power of Work*

Goodwill is different things to different people. We're a place to donate and recycle items no longer needed. We're a place to shop for bargains. We're a resource for businesses for filling permanent and temporary jobs and outsourcing light industrial work. And we are a place for new beginnings.

Everything Goodwill does is focused on helping local residents with disabilities and disadvantages get to work. Since our founding in 1948, we have empowered thousands of individuals with the marketable job skills needed to succeed in the competitive workplace. With its array of career services and partnerships with local businesses, Goodwill helps build independence and change lives through the *power of work*.



## CORPORATE HEADQUARTERS & TRAINING CENTER

2835 Rte. 73 • Maple Shade, NJ 08052  
856.439.0200 • 856.439.0843 fax  
www.goodwillnj.org

## GOODWILL'S TRAINING CENTERS

222 South White Horse Pike Stratford, NJ 08084 856.566.5375	GTS 5461 Rte. 70 Pennsauken, NJ 08110 856.317.0640
7186 N. Park Drive Pennsauken, NJ 08109 856.317.5847	

## OUTSOURCING & PRODUCTION FULFILLMENT CENTER

7060 Colonial Hwy. Pennsauken, NJ 08110 856.665.7270	CNA Services 222 West State St. Trenton, NJ 08608 609.393.3660
455-473 N. 7th Street Philadelphia, PA 19123 215.922.6807	

## RETAIL STORES & DONATION CENTERS

### IN NEW JERSEY

**Aberdeen**  
(296 Rt. 35)  
**Bayville**  
(333 Rt. 9)  
**Atlantic City**  
(3711 Ventnor Ave.)  
**Bordentown**  
(594 Rte. 206)  
**Cardiff**  
(6701 Black Horse Pike)  
**\*Cherry Hill**  
(Browning Lane & Rte. 561)  
**Ewing**  
(1628 N. Olden Ave.)  
**Hammonton**  
(200 White Horse Pike)  
**Glassboro**  
(Rte. 47 @ Dalton Dr.)  
**Maple Shade**  
(2835 Rte. 73)

**\*Medford**  
(148 Old Marlton Pike)  
**Lumberton**  
(1626 Rte. 38)  
**Millville**  
(1418 High St.)  
**Pennsauken**  
(5461 Rte. 70)  
**Stratford**  
(222 White Horse Pike)  
**Willingboro**  
(4314 Rte. 130)  
**\*Williamstown**  
(1820 N. Black Horse Pike)  
**Woodbury Heights**  
(832 Mantua Pike)

### IN PHILADELPHIA

534-536 South St.  
Front & Oregon  
22nd & Passyunk  
(\* Indicates Attended  
Donation Center, only)

Goodwill also operates computer donation sites in Municipal Public Works Yards throughout NJ. For a complete listing, please visit [www.goodwillnj.org](http://www.goodwillnj.org).

ACCREDITED BY



WE PUT  
**PEOPLE**  
TO WORK

GOODWILL INDUSTRIES OF SOUTHERN NJ & PHILADELPHIA IS A NONPROFIT, COMMUNITY BASED ORGANIZATION. ITS MISSION IS TO PUT PEOPLE WITH SPECIAL NEEDS TO WORK.



GOODWILL INDUSTRIES  
OF SOUTHERN NJ & PHILADELPHIA

we put people to work!



## NEW BEGINNINGS START HERE

### Employment & Training

New beginnings start at Goodwill's Training Centers. Put quite simply, Goodwill exists to help anyone who needs or wants a job. All of our career services are designed to achieve a positive end result — employment in the community. Graduates of Goodwill training programs can be found working in every sector of industry from business, retail and healthcare to janitorial and manufacturing. At Goodwill, we believe everyone deserves the chance to experience the dignity and independence that accompany the *power of work*.

#### Our career services include:

- Diagnostic Vocational Evaluation
- Computer Skills Training
- Light Industrial Skills Training
- Commercial Driver's License Class-B (CDL-B Training)
- Forklift Certification Training
- Official Certiport Testing Center (Microsoft Partner)
- Ex-Offender Re-entry Program
- Supported Work
- School-to-Work
- Job Coaching, Placement & Retention Services
- Member For Life Program
- And many others...

## WE PUT YOUR DONATIONS TO WORK

### Retail Sales & Donations

At Goodwill, we put your donations to work—literally! Here is how the donation process works:

- You donate undersized or underused items to Goodwill.
- Items are processed for resale.
- Value conscious shoppers purchase items in our retail stores.
- Store revenues are funneled directly into career services for local residents faced with employment barriers.
- Graduates of our job training programs secure employment and become tax paying members of the local workforce, contributing to the economic vitality of the community.

Goodwill welcomes donations of clothing, accessories, toys, household items, books, small electronics, furniture and more. Donations of computers, printers, scanners and peripheral equipment as well as cars, boats and RVs are also accepted. Goodwill donation centers are staffed by company representatives. All donations are tax deductible.

## CREATING JOB OPPORTUNITIES BUSINESS SERVICES

Whether your business is in need of permanent or temporary employees, sub-industrial contract services or document imaging services, partnering with Goodwill is a sound business decision—one that will save you valuable time and money while simultaneously providing job opportunities for local residents faced with employment barriers.

- **GTS** is a full service temporary employment service agency that provides businesses with skilled, dependable employees. We handle everything from recruiting and advertising to drug testing, reference checking and testing to ensure a good job match is made.
- **Goodwill's Outsourcing & Production Fulfillment Center** offers bulk mailing and other services to help your business fulfill its production goals.
- Full service cleaning capabilities are available through **Goodwill's Janitorial Service**. Our customer list includes businesses, churches, schools and retail outlets.
- **Goodwill's Document Services** division offers document scanning services to help businesses with document storage issues.